



[Home](#) | [Calendar](#) | [Academic Affairs](#) | [Student Affairs](#) | [President's Office](#) | [Directory](#) | [JOBS](#) | [Giving to PVAMU](#)

Business Affairs

- ▶ Our Mission
- ▶ Contact Information
- ▶ Organization Chart
- ▶ Staff Directory
- ▶ Forms Library
- ▶ Policy Library
- ▶ Reports Library
- ▶ Training Library
- ▶ Business Affairs Online Services
- ▶ Professional Development
- ▶ Business Affairs Calendar
- ▶ Office of VPBA Presentations
- ▶ Send us your comments

Business Affairs Services

▼ **Central Utilities**

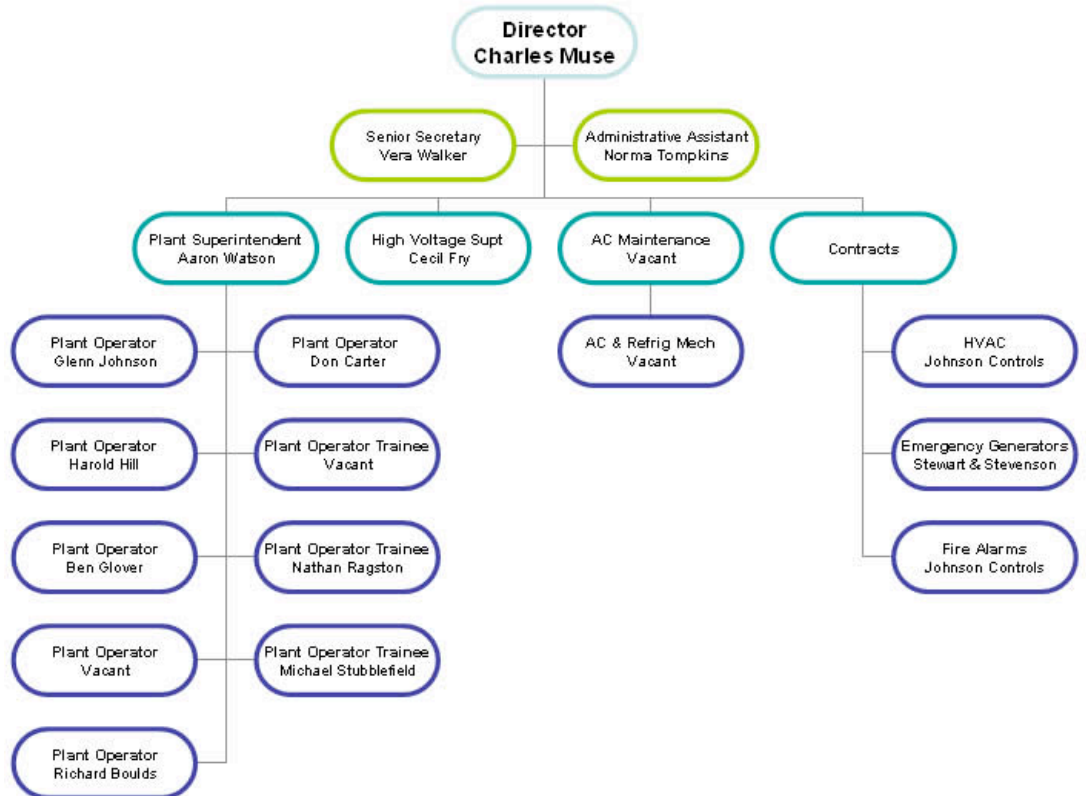
- Mission
- Annual Water Quality Report
- Contact Us
- Customer Satisfaction Survey
- Energy Conservation
- Notices
- **Organizational Chart**
- PVAMU's Utilities Employees
- PVAMU'S Energy Conservation Tips

- ▶ Campus Maintenance
- Construction & Planning
- ▶ Facility Maintenance
- Physical Plant Operations Key Contacts
- Physical Plant Operations Organizational Chart

[Home](#) [Student Portal](#) [Panther Email](#) [Printable Version](#)

[Home](#) » [Business Affairs](#) » [Physical Plant Operations](#) » [Central Utilities](#) » [Organizational Chart](#)

Organizational Chart



[Contact PVAMU](#) | [ADA Resources](#) | [Compact with Texans](#) | [Homeland Security](#) | [Legal Notices](#)
[Open Records](#) | [Privacy](#) | [Risk, Fraud & Misconduct Hotline](#) | [TRAIL](#) | [State of Texas](#) | [Webmaster](#) | [Jobs](#)

2003 PRAIRIE VIEW A&M UNIVERSITY - ALL RIGHTS RESERVED
 P.O. Box 519 - Prairie View, Texas - 77446-0519
 FM 1098 Rd & University Dr, Prairie View, TX 77446
 University Operator: (936) 261-3311
 Best viewed with Netscape 6 or Internet Explorer 6