



Home | Calendar | Academic Affairs | Student Affairs | President's Office | Directory | JOBS | Giving to PVAMU

Business Affairs

Home Student Portal Panther Email Printable Version

Home » Business Affairs » Business Affairs Services » Environmental Health & Safety Department » Safety Tips » Chemical Emergency

About Us || Policies & Procedures || Forms || Programs & Services || Safety Tips || Training || Contact Us

CHEMICAL EMERGENCY:

During a chemical emergency, you may be asked by campus officials to seek shelter where you are instead of trying to evacuate the area. Staying indoors until the emergency is over may be safer than going outside where the air could be unsafe to breathe.



STEPS FOR TAKING SHELTER

- Go inside and stay calm
- If your eyes, nose or throat become irritated, cover your mouth and nose with several layers of damp cloths and take frequent shallow breaths
- Building Maintenance will turn off the A/C or heat if the systems are drawing in outside air in.
- Ensure that all windows and doors are closed
- Tune in to your local emergency radio KPVU 91.3 FM or television station for emergency information and directions from local officials
- Use the telephone for emergencies only
- The University Police Department will issue information on the chemical emergency

STEPS FOR EVACUATION

- Evacuate only if told to do so by the Police or other campus authorities
- Stay calm and gather essential items
- Keep all windows and air vents in the vehicle closed
- Use special routes designated by University Police & Campus authorities

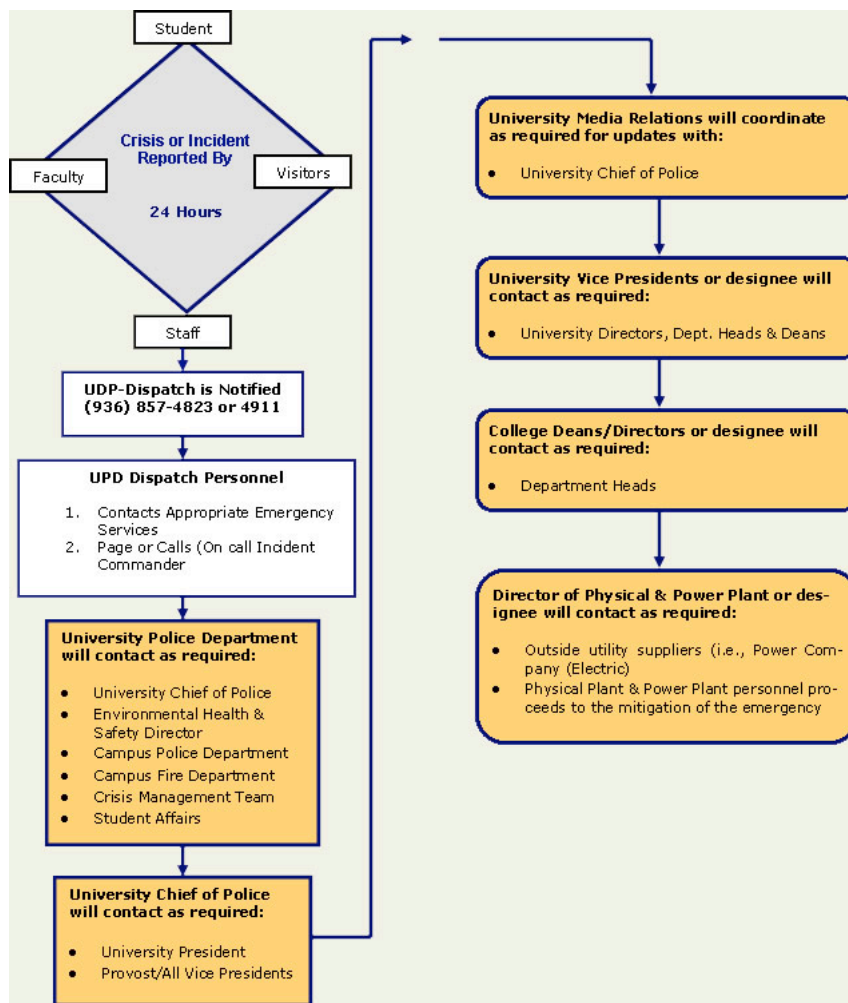
Emergency Operation Plan

- ▶ Our Mission
- ▶ Contact Information
- ▶ Organization Chart
- ▶ Staff Directory
- ▶ Forms Library
- ▶ Policy Library
- ▶ Reports Library
- ▶ Training Library
- ▶ Business Affairs Online Services
- ▶ Professional Development
- ▶ Business Affairs Calendar
- ▶ Office of VPBA Presentations
- ▶ Send us your comments

Business Affairs Services

- About Us
- ▶ Business Continuity Plan
- Contact Us
- EHS Policies & Procedures
- EHSD Links
- Forms
- Programs & Services
- ▼ **Safety Tips**
 - Blood-Borne Pathogens
 - Bomb Threat Checklist
 - **Chemical Emergency**
 - Fire Emergency
 - Flood
 - Laboratory Fume Vent Hood Safety
 - Power Failure
 - Student Safety Awareness
 - Tornado or Storm
- Training

E H S D



Contact PVAMU | ADA Resources | Compact with Texans | Homeland Security | Legal Notices
Open Records | Privacy | Risk & Misconduct Hotline | TRAIL | State of Texas | Webmaster

2003 PRAIRIE VIEW A&M UNIVERSITY - ALL RIGHTS RESERVED
P.O. Box 519 - Prairie View, Texas - 77446-0519
FM 1098 Rd & University Dr, Prairie View, TX 77446
University Operator: (936) 261-3311
Best viewed with Netscape 6 or Internet Explorer 6